



INSTRUCTION BULLETIN

No. 9015176
Machine: T17
Published: 11-2016
Rev. 00

NOTE: DO NOT DISCARD the Parts List from the Instruction Bulletin. Place the Parts List in the appropriate place in the machine manual for future reference. Retaining the Parts List will make it easier to reorder individual parts and will save the cost of ordering an entire kit.

NOTE: Numbers in parenthesis () are reference numbers for parts listed in Bill of Materials.

Installation instructions for **kit number 9020070**

SYNOPSIS:

This kit contains the parts needed to replace rear squeegee assembly on T17 scrubbers.
Please follow step-by-step instructions.

SPECIAL TOOLS / CONSIDERATIONS: NONE

(Estimated time to complete: 30 minutes)



PROTECT THE ENVIRONMENT

Please dispose of packaging materials, used machine components such as batteries and fluids in an environmentally safe way according to local waste disposal regulations.

Always remember to recycle.

PREPARATION:

FOR SAFETY: Before leaving or servicing machine, stop on level surface, turn off machine, and remove key.

1. If necessary, lower the rear bumper door / step.

INSTALLATION:

1. Disconnect the vacuum hose from the rear squeegee assembly. (Fig. 1)

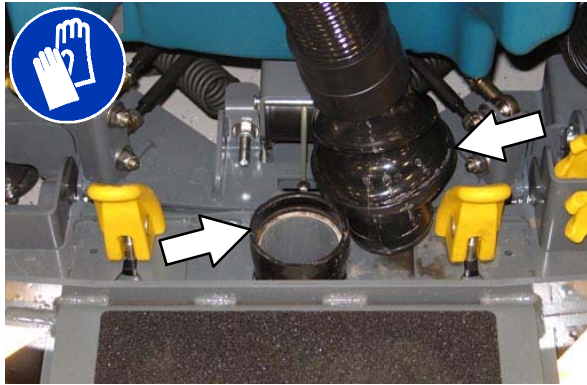


FIG. 1

2. Loosen both squeegee mounting handles. (Fig. 2 / Fig. 3)



FIG. 2



FIG. 3

3. Pull the rear squeegee assembly from the machine. (Fig. 4)



FIG. 4

4. Loosen the rear retainer latch and remove the latch and the retainer from the squeegee assembly. (Fig. 5 / Fig. 6)



FIG. 5



FIG. 6

5. Remove the rear squeegee from the squeegee assembly. Set the rear squeegee aside. (Fig. 7)

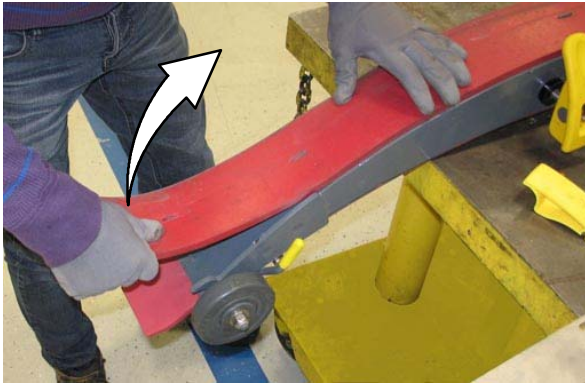


FIG. 7

6. Turn the rear squeegee assembly over to access the front of the squeegee assembly.
7. Loosen the front retainer latch and remove the latch and the retainer from the squeegee assembly. (Fig. 8 / Fig. 9)

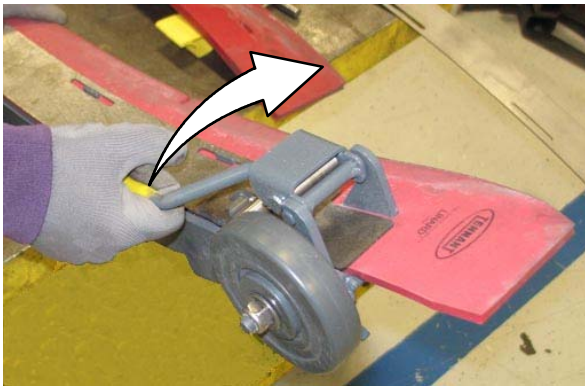


FIG. 8



FIG. 9

8. Remove the front squeegee from the squeegee assembly. Set the front squeegee aside. Discard the rear squeegee assembly. (Fig. 10)

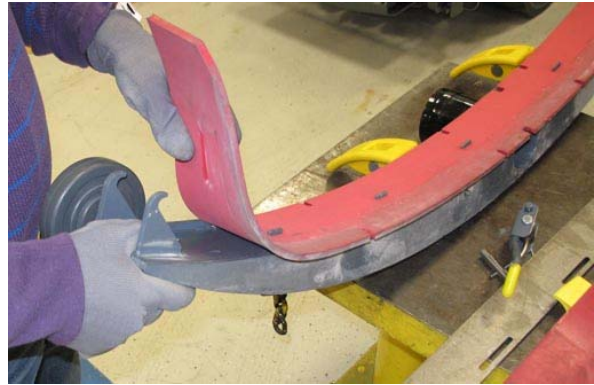


FIG. 10

9. Install the rear squeegee and front squeegee onto the new rear squeegee assembly (1) in the reverse order in which they were removed from the old squeegee assembly.
10. Install the rear squeegee assembly (1) onto the machine.
11. Reconnect the rear vacuum hose to the rear squeegee assembly (1)..

LEVEL THE REAR SQUEEGEE:

1. Lower the squeegee and drive the machine several meters (feet) forward and slowly bring the machine to a stop.
2. Check the squeegee deflection over the full length of the squeegee blade.
3. If the deflection is not the same over the full length of the blade, use the tilt adjust knob to make adjustments.

DO NOT disconnect the vacuum hose from the squeegee assembly when leveling the squeegee.

4. To adjust the squeegee leveling, loosen the tilt lock knob. (Fig. 11)

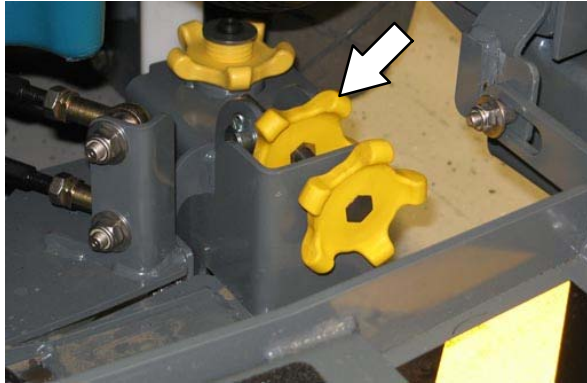


FIG. 11

5. Turn the squeegee tilt adjust knob counter-clockwise to decrease the deflection at the ends of the squeegee blade. (Fig. 12)

Turn the squeegee tilt adjust knob clockwise to increase the deflection at the ends of the squeegee blade.

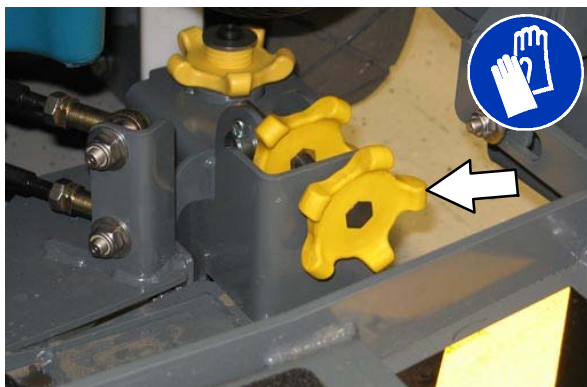


FIG. 12

6. Tighten the tilt lock knob.
7. Drive the machine forward with the squeegee down to recheck the squeegee blade deflection if adjustments were made.
8. Readjust the squeegee blade deflection if necessary.

ADJUST THE REAR SQUEEGEE BLADE DEFLECTION:

1. Lower the squeegee and drive the machine several meters (feet) forward and slowly bring the machine to a stop.
2. Look at the amount of deflection or “curl” of the squeegee blade. The correct amount of deflection is 12 mm (0.50 in) for scrubbing smooth floors and 15 mm (0.62 in) for rough floors. (Fig. 13)

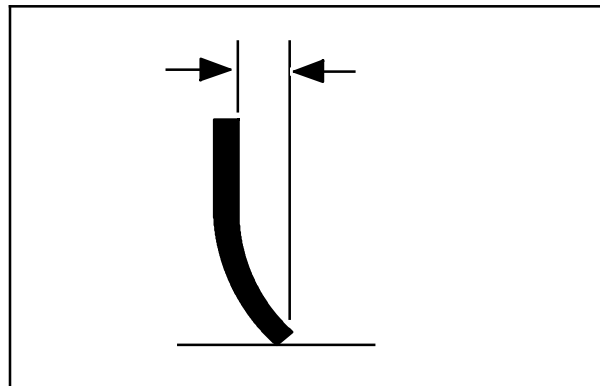


FIG. 13

3. To adjust the overall squeegee blade deflection, loosen the lock knobs on both sides of the machine. (Fig. 14)

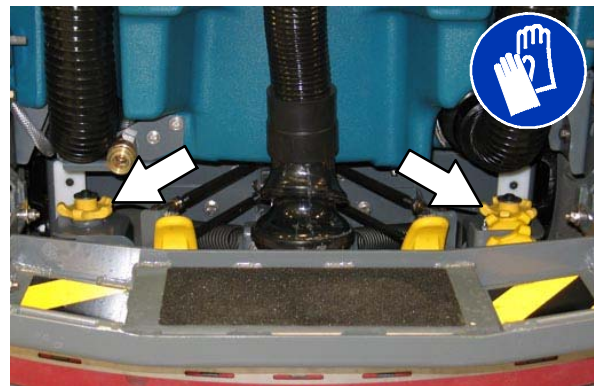


FIG. 14

- Turn the adjustment knobs clockwise to increase deflection or counterclockwise to decrease deflection. (Fig. 15)

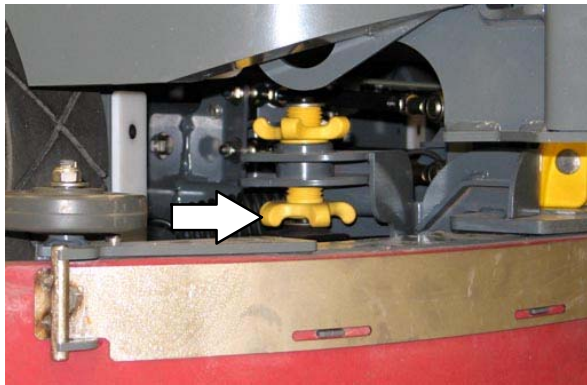


FIG. 15

- Retighten the lock knobs.
- Drive the machine forward again to recheck the squeegee blade deflection.
- Readjust the squeegee blade deflection if necessary.
- Raise the rear bumper door / step when finished adjusting the rear squeegee blade deflection.

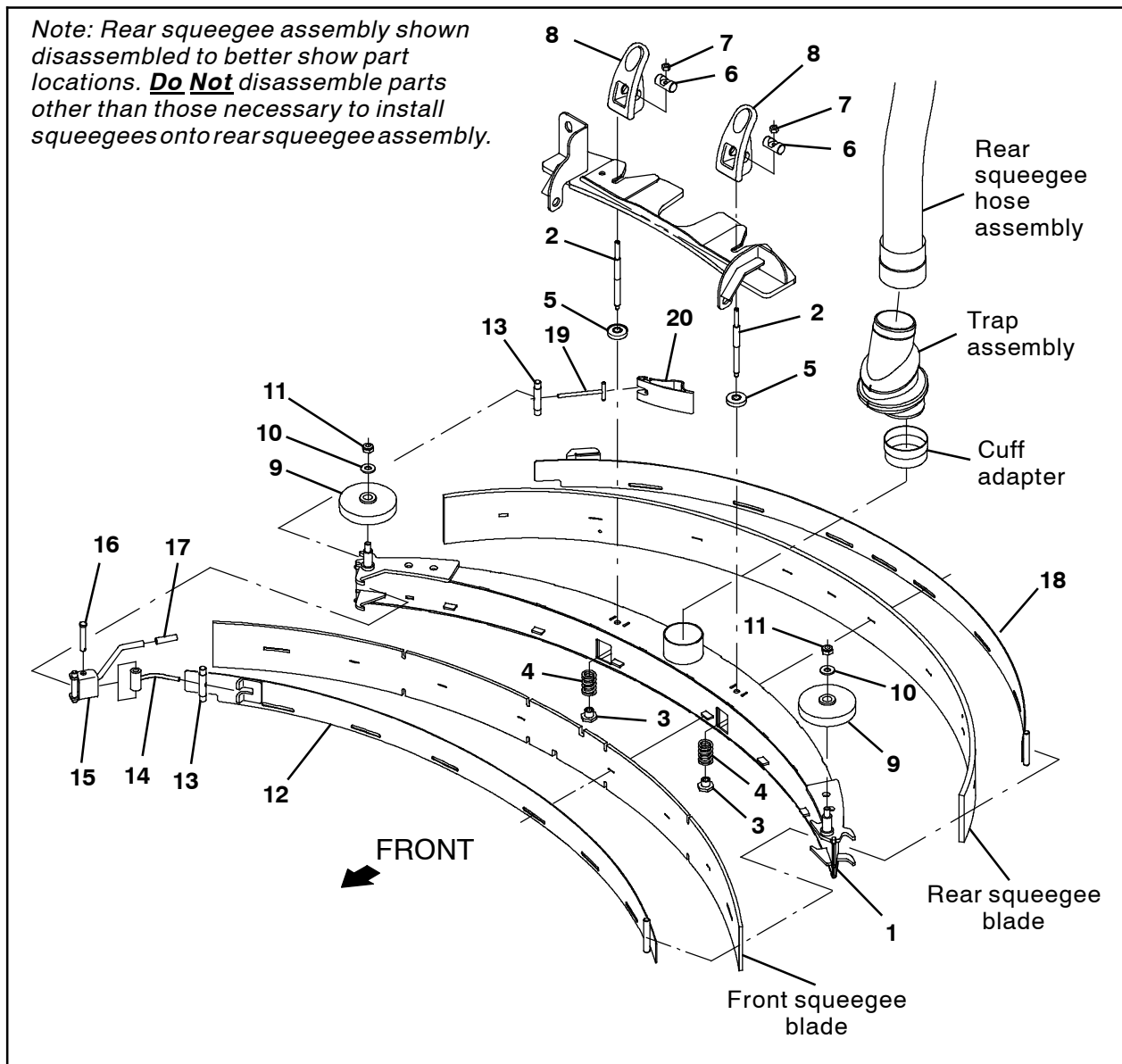


FIG. 16

Bill Of Materials For Squeegee Kit, CI [T17] - 9020070

Ref.	Part No.	Description	Qty.
	9020070	Squeegee Kit, Ci [T17]	1
1	1213530	Squeegee Frame Assy	1
2	1206251	Rod, Thrd, 2end, M8x1.25/ M10x1.5 - 02	2
3	391345	Nut, T, M10 X 1.50 X 0.62od X 0.5l	2
4	1212782	Spring, Cmpr, 0.98od .14wir 02.00l, SS	2
5	1208629	Ring, Mtg, Sqge, .38l	2
6	1055396	Pin, 0.63d, 02.0l [W/Cbore, M8 Screw]	2
7	07786	Nut, Hex, Std, M8 X 1.25, SS	2
8	1052532	Grip, Lock	2
9	363162	Wheel, 04.0d 0.89w 0.64b	2
10	01686	Washer, Flat, 0.44b 1.00d .08, SS	2
11	08714	Nut, Hex, Lock, M10 X 1.5, NI, SS	2
12	1209122	Strap Wldt	1
13	1206530	Pin, 0.43d 2.75l [303ss]	2
14	1209121	Arm Wldt	1
15	1209120	Bracket Wldt	1
16	51813	Pin, Clevis, 0.37d X 2.12l	1
17	1208858	Cover, Handle	1
18	1207103	Clamp Wldt, Rear	1
19	21606	Bar Wldt, Retainer, Sqge, Rear	1
20	1208906	Cam, Rear	1

TENNANT COMPANY
P. O. Box 1452
Minneapolis, MN 55440-1452